

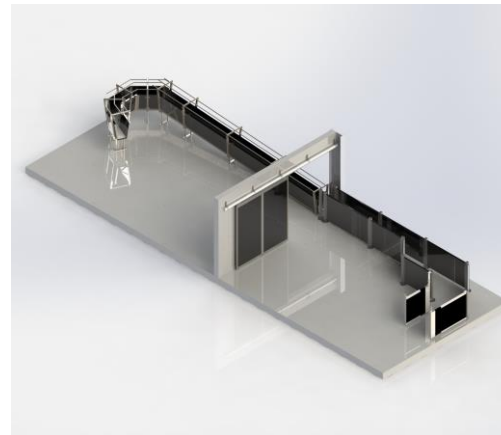
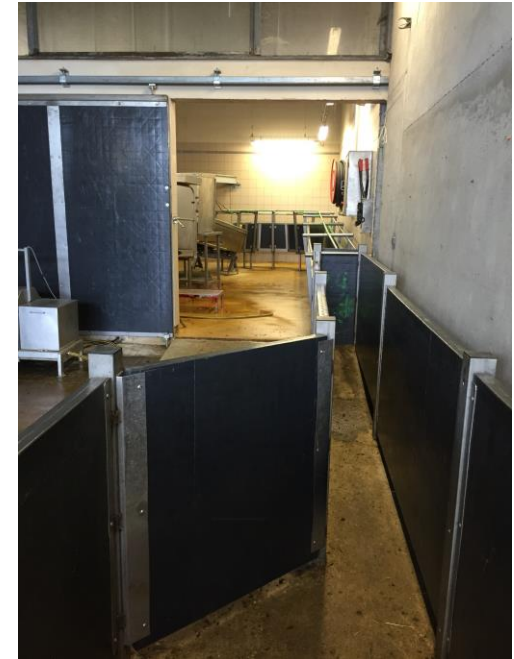


SMALL LIVESTOCK RACE TO ANAESTHESIA BOX OR RESTRAINER

Thanks to its top bow and profile, the small livestock driving alley is designed to prevent reversal inside the corridor.



The floor is designed to withstand extensive slopes (up to 20°).
It also acts as a gutter for animal waste.
Direct laying out on the floor, no civil engineering required.
Materials: PP and inox



Welded Construction - Steel Quality S235 - Hot Galvanized Finish according to EN ISO 1461 2009

Non-contratual photos