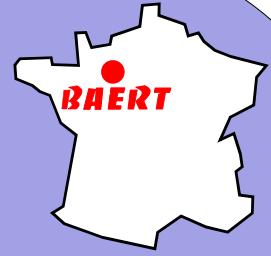


INDUSTRIAL METALWORK

# BAERT



## SMALL CATTLE ANESTHESIA ELECTRIC ROLLING DOOR / PNEUMATIC SASH DOOR

### SMALL CATTLE FEED TUNNEL



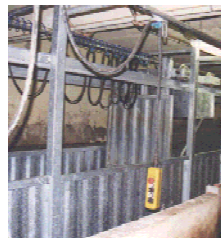
Single, double or multi-directional tunnels able to supply the restrainer with up to 400 pigs/hour. Fitted with electronic rolling doors or pneumatic sash doors, this system limits the number of operators.

### RESTRICTIVE PEN FOR SMALL CATTLE



Variable size circular restrictive pen, adjustable according to the capacity, facilitates the work of the operator who reduces the area of the pen progressively as the animals are anaesthetised.

### ELECTRIC ROLLING DOOR / PNEUMATIC SASH DOOR



The introduction of pigs and sheep into the corridors leading to the anaesthetising station requires special equipment.

The electric rolling door / pneumatic sash door enables the waiting area to be reduced progressively with the animals' progress.

The operator remains at the critical animal entry point.

The independent remote gate movement control box contributes to the flexibility of operation of the system. The preparation of the following batch while the gate is moving forward guarantees the line supply rate (max. 400/hour)

SPECIALISED  
AGRO-EQUIPEMENT

61400 MAUVES SUR HUISNE  
France  
Tel : +33 (0)2 33 83 83 44  
Fax : +33 (0)2 33 83 80 13  
e-mail : [info@baert.fr](mailto:info@baert.fr)  
Internet : <http://www.baert.fr>